



Come. See. Connect.

ABOUT US

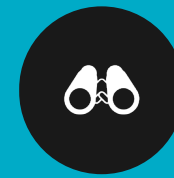
Albacore Was Founded In

2018 and has become one of the most reliable and reputable companies in the mining sector thanks to its principled approach to work and its attention to the sensitivities of the industry. We serve as a supply and solution partner to local and international companies by representing more than 30 of the world's leading companies in the fields of underground and surface mining. In this way, we provide our customers not only with products but also with knowledge, experience, and engineering support. We can provide all the stages required in the process of establishing a mine from scratch, and with our experienced team of engineers, we also offer technical consultancy, project management, and engineering solutions for implementation. Our strong supply chain, field experience, and dynamic team are our greatest assets.



Vision For The Future

We aim to lead the mining industry through sustainable practices, creating value for stakeholders while safeguarding the environment and local communities.



Vision

We never consider our achievements sufficient, and we continue to develop innovative solutions...



Mission

In line with the sensitivities and ethical values of the mining sector...

VISION

We Never Consider Our

Achievements sufficient, and we continue to develop innovative solutions to best respond to the changing and evolving needs of the industry. Our goal is to establish lasting business partnerships by offering our customers the most suitable, efficient, and advanced alternative products, and to maintain our position as one of the leading companies in the industry.



MISSION

In Line With The

Sensitivities and ethical values of the mining sector, our principled approach to work contributes to increasing operational efficiency and supports sustainable, reliable, and environmentally conscious mining practices.



Coal Mining

What Are We Doing?

Mechanized Excavation
Equipment

Transportation Systems

Energy and Electrical
Systems

Ventilation and
Security Systems

Drilling and Cutting
Systems

Pump and Liquid Transfer
Systems

Shaft Systems

Connectors and Accessories



Coal Mining Equipment And Services

Mechanized Excavation and Hauling Systems

- FAMUR – Long Foot Systems, Gallery Opening Machines
- TRENT – Long Foot Mechanized Mattress Rollers
- DAT – Semi- and Fully-Mechanized Excavation Systems, Hydraulic Equipment

Transportation Systems

- COZY-FLEX – Underground and Overground Industrial Belting (C1 Certified)
- GERMAN BELT – Underground and Overground Industrial Belting (C1 Certified)
- FASING – Chains and Chain Locks, Conveyor Accessories (Pallets, Pallet Bases, Gears)
- PREINFALK (Pw Hueber) – Reducers, Integrated Drive Systems



Coal Mining Equipment And Services

Energy and Electrical Systems

- ELGOR-HANSEN – Underground Electrical Equipment: Transformers, Circuit Breakers, Frequency Converters
- TELVIS – Underground Telephones and Communication Systems

Ventilation and Security

- ABC – Fan and Fan Tube Systems
- HASO – Gas Monitoring and Camera Systems
- ONE SEVEN – Underground Fire Suppression System
- TERMOSPEC – Underground Cooling Equipment
- ASTTAR – Self-Rescuer Mask with Oxygen and Personal Headlamp



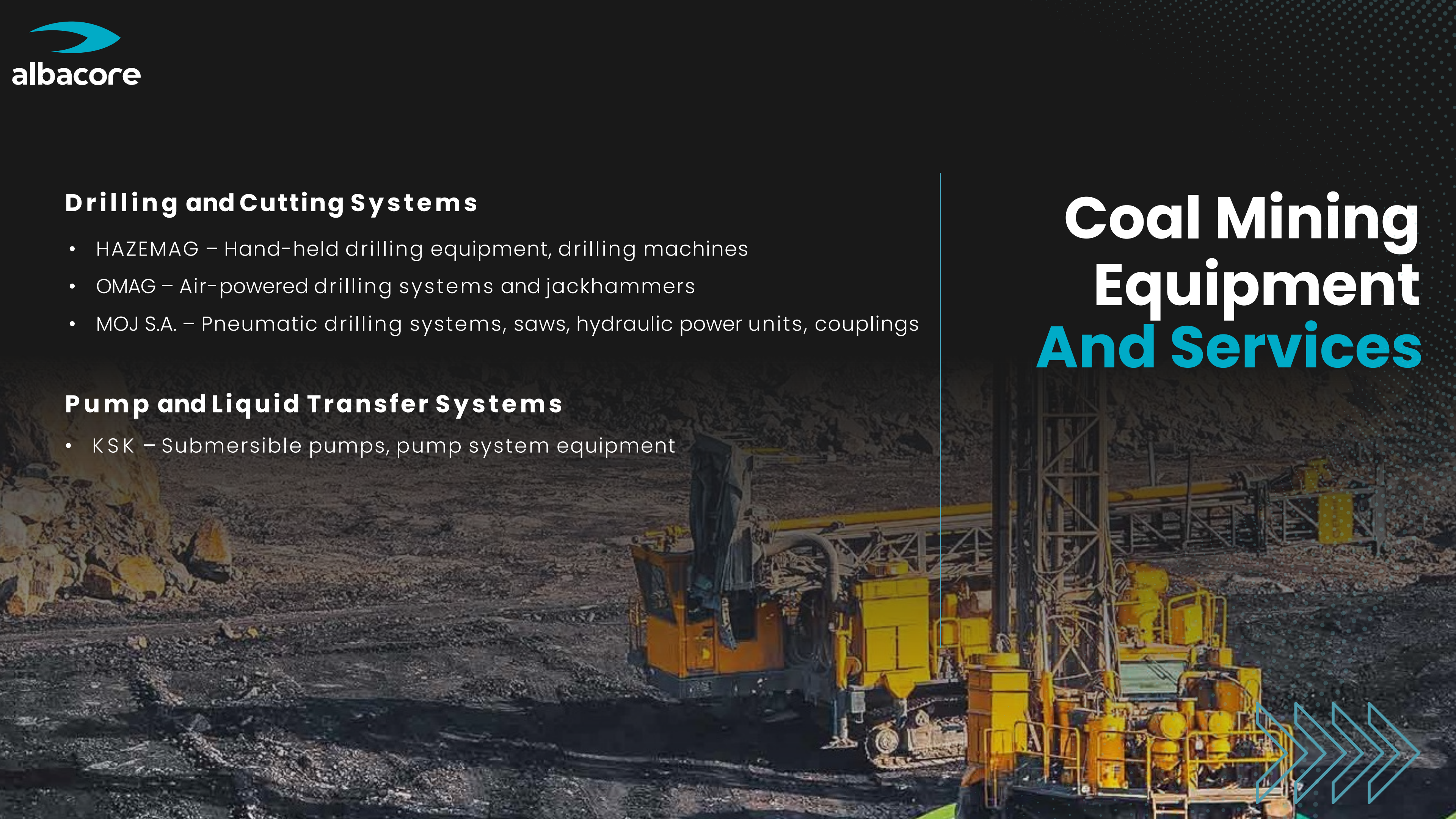
Drilling and Cutting Systems

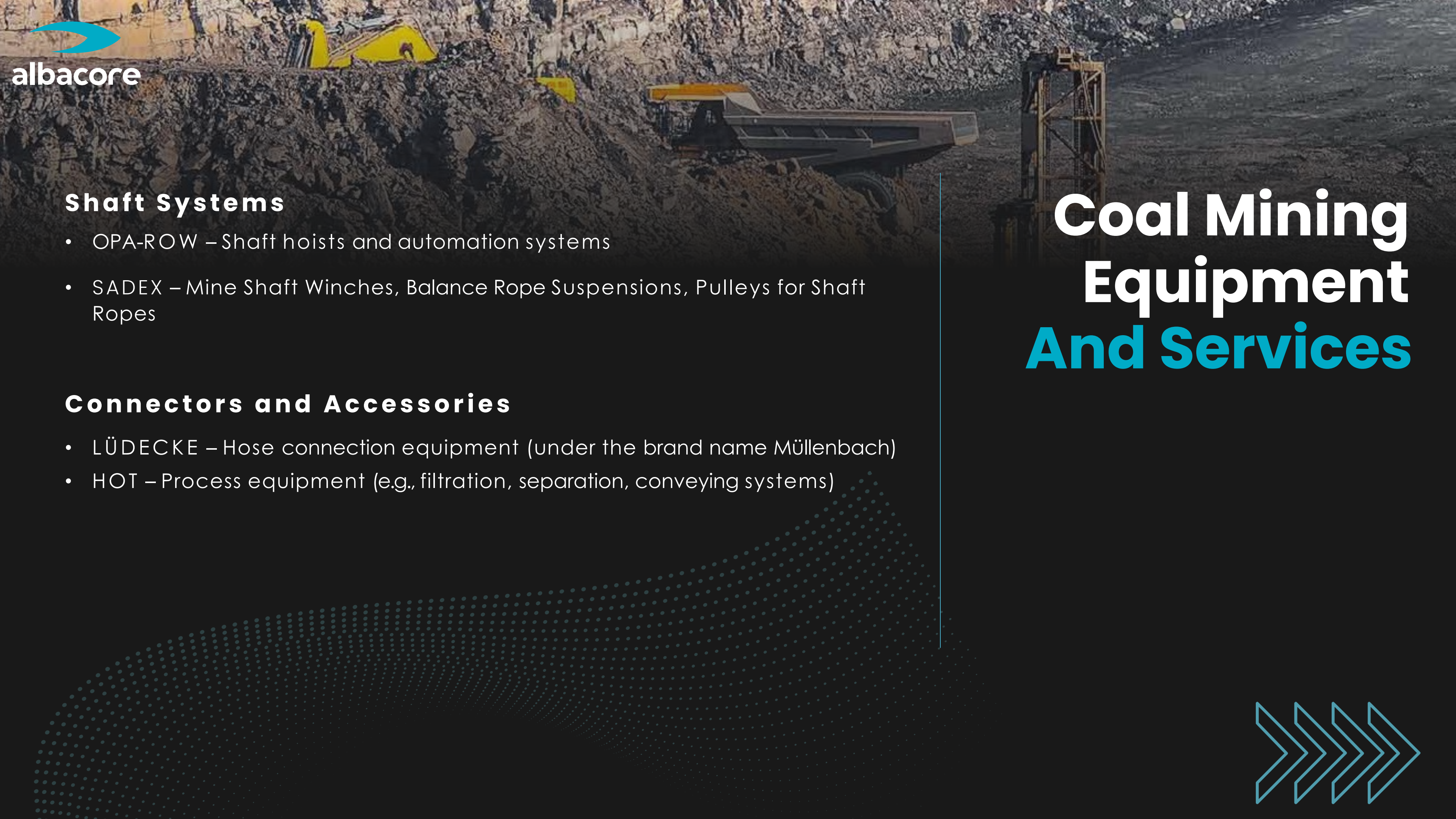
- HAZEMAG – Hand-held drilling equipment, drilling machines
- OMAG – Air-powered drilling systems and jackhammers
- MOJ S.A. – Pneumatic drilling systems, saws, hydraulic power units, couplings

Pump and Liquid Transfer Systems

- KSK – Submersible pumps, pump system equipment

Coal Mining Equipment And Services





Shaft Systems

- OPA-ROW – Shaft hoists and automation systems
- SADEX – Mine Shaft Winches, Balance Rope Suspensions, Pulleys for Shaft Ropes

Connectors and Accessories

- LÜDECKE – Hose connection equipment (under the brand name Müllenbach)
- HOT – Process equipment (e.g., filtration, separation, conveying systems)

Coal Mining Equipment And Services





METAL AND INDUSTRIAL RAW MATERIAL MINING

What Are We Doing?

- Power Transmission Systems
- Transportation and Conveyor Systems
- Crushing, Grinding, and Screening Systems
- Enrichment and Separation Systems
- Filtration and Concentration Systems
- Pump and Liquid Transfer Systems
- Process Support Units
- Automation and Control Systems
- Electrical and Safety Systems
- Project and Consulting Services



METAL AND INDUSTRIAL RAW MATERIAL MINING Equipment And Services

Power Transmission Systems

- Reducers and integrated drive systems Used in heavy-duty cranes, conveyors, and rotary kilns
- Industrial couplings, clutches, and drive shafts. Used in presses, mills, and transmission systems where torque must be transmitted safely.

Power Transmission Systems

- Chains and chain locks
Suitable for heavy chain conveyor systems used in slag, ore, and ash transportation.
- Conveyor belts
Various types of belts suitable for high temperatures, abrasive environments, and inclined lines are available. Flat belts, Sidewall belts, Flame-retardant (C1/C2 certified), Z belts, Anti-static, and Heavy-duty belts.
- Automated conveyor systems
Offers automatically controlled systems for use in fully integrated transport lines.

METAL AND INDUSTRIAL RAW MATERIAL MINING Equipment And Services

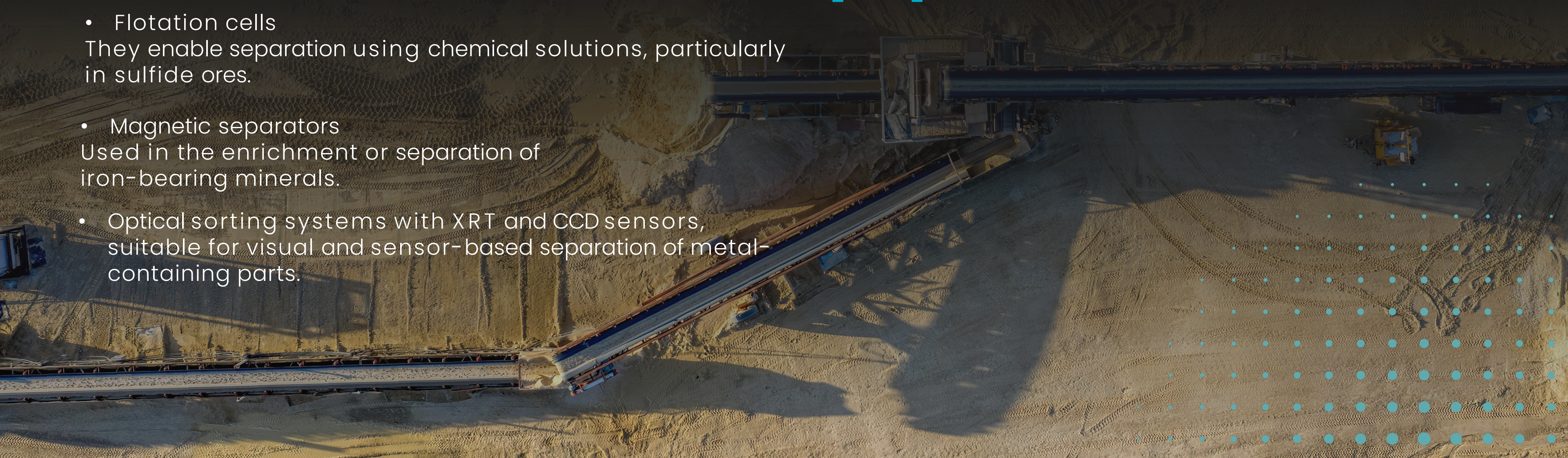
Crushing, Grinding, and Screening Systems

- Jaw, impact, and cone crushers
Suitable for primary and secondary crushing operations.
- Ball and rod mills
They grind ores to prepare them for flotation or concentration.
- Vibrating screen systems
Used in sizing and classification processes.
- Spiral classifiers and air classifiers
Perform granulometric separation of ground material.

Enrichment and Separation Systems

- Dense phase cyclones
Used in separation processes based on density differences.
- TBS and spiral separators
Used for the gravitational separation of fine and medium-sized ore particles.
- Flotation cells
They enable separation using chemical solutions, particularly in sulfide ores.
- Magnetic separators
Used in the enrichment or separation of iron-bearing minerals.
- Optical sorting systems with XRT and CCD sensors,
suitable for visual and sensor-based separation of metal-containing parts.

METAL AND INDUSTRIAL RAW MATERIAL MINING Equipment And Services



METAL AND INDUSTRIAL RAW MATERIAL MINING Equipment And Services

Filtration and Separation Systems

- Filter Press Systems
Used to dewater sludge produced after ore preparation.
- Ceramic Vacuum Filters
Ensures efficient filtration of finer particulate material.
- Thickener
It separates solid-liquid mixtures and allows water to be recovered from the upper phase.

Pump and Transfer Systems

- Mud Pumps
Used for transferring high-viscosity and abrasive mud.
- Piping Systems, Hoses, and Fittings
Offers heavy-duty pipe connections and quick-connect fittings.

Process Support Units

- Agitators
Used for chemical solution homogenization and in process tanks.
- Drying Systems
Filtered concentrates are dried to make them suitable for sale.



Automation and Control Systems

- SCADA-Based Process Automation

Central monitoring, data collection, and automatic control of the entire facility.

- Remote Control Systems

Allows the operator to control the equipment without entering the hazardous environment.

- IoT Sensor Technologies

Vibration, temperature, and equipment health monitoring systems for maintenancesesi

Connectors and Accessories

- LÜDECKE – Hose connection equipment (under the brand name Müllenbach)
- HOT – Process equipment (e.g., filtration, separation, conveying systems)

METAL AND INDUSTRIAL RAW MATERIAL MINING Equipment And Services





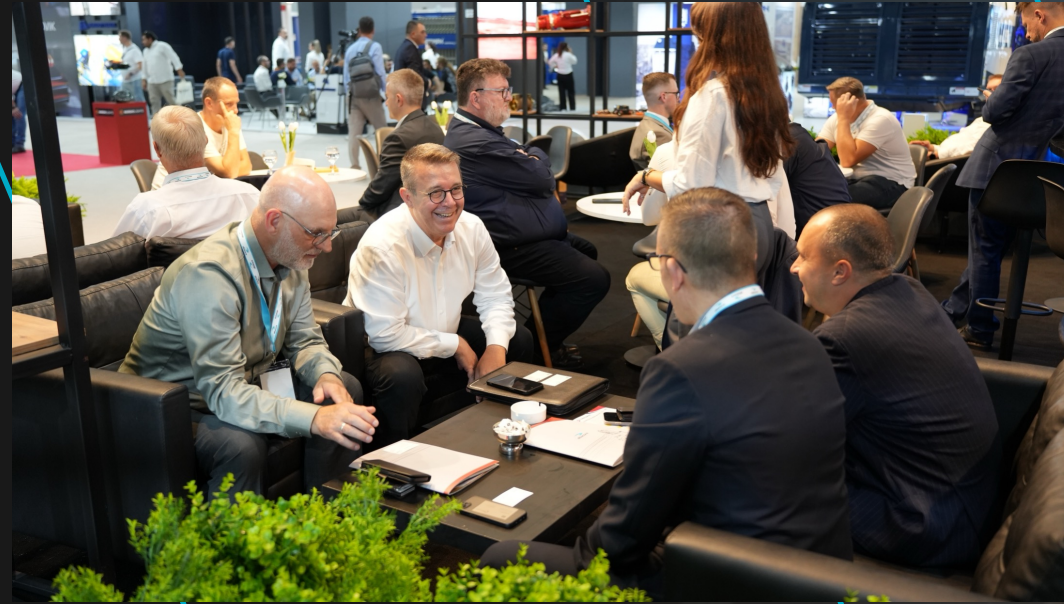
albacore

WHY CHOOSE US? Success In The

Mining industry is possible with the right equipment and reliable business partners. We represent over 30 of the world's leading brands in Turkey, offering the industry the widest product portfolio, the highest quality, and reliability. With our strong brand network, expert team, and after-sales support services, we are not just an equipment supplier but also your solution partner. With our approach that increases efficiency, optimizes costs, and is based on long-term cooperation, we are one of the reliable leaders in the industry. Companies that choose us gain not only equipment but also fast supply, technical consultancy, and sustainable solutions. Because while we support mining today, we also strive to contribute to shaping its future. In summary, we are your solution partner who has earned the trust of the industry, brings international brands to Turkey, and always aims to be one step ahead.



FAIRS Minex 2025



Albacore participated in the 2025 Minex İzmir Fair, showcasing the latest technologies and solutions in the mining sector and signing significant cooperation agreements.



CONFERENCES AND TRADE FAIRS

WE HAVE PARTICIPATED IN



TÜYAP
2018



MINEX
2019



MINEX
2021



MINEX
2023

OUR REFERENCES



In the engineering projects we have undertaken, we have established strong partnerships with leading companies in the industry. Thanks to these valuable business partners, we have produced sustainable solutions by combining quality, reliability, and innovation in every project. Our partnerships are one of the most important factors that strengthen our experience and lead our projects to success. Every step we take together enables us to make a difference in the industry and provide our customers with the best service.

OUR PARTNERS

Over the years, we have had the privilege of collaborating with leading companies in the industry on our engineering projects. The solutions we have developed together with these valued partners have enabled us to provide our customers with the best service by combining both quality and reliability. Each partnership is an important step that strengthens our experience and leads our projects to success.

FAMUR

FAMUR
ELGÓR+HANSEN
Safety and Power

FAING S.A.

PW Hueber
The Gear Company

OM AG

HASO

KSK

DAT
BERGBAUTECHNIK GMBH

OPA-ROW

HOT
Process For Environment

Telvis

COZYFLEX

one seven

PROOF
MINING

MOJ S.A.
Grupa Fasing 1913

ABC
VENTILATION
VS

S A D E X

HAZEMAG

TL

CTT EMAG

EXME Berger Group

TERMOSPEC

PRATLEY

ELMECH
KAZETEN

LÜDECKE

Łukasiewicz
Instytut Tele-
i Radiotechniczny

ROSIT
POWER FOR SAFETY

ASTAR





PARTNERS

Catalog



PART- NER

LONG LEG SYSTEMS



GENERAL FEATURES

For mines requiring longwall systems, reinforced roof supports are indispensable. Since the early 1970s, 200,000 FAZOS and GLINIK brand supports (now owned by the FAMUR Group) have been produced. This equipment is designed for use in all mirror excavation technologies used in the modern mining industry (not only in coal mining). It meets the detailed criteria of European and global standards and mining regulations, as well as the relevant safety requirements. Famur supports are custom-designed using the latest design tools (3D techniques and FEM) as requested by the customer. Each support design is tested for durability in accredited laboratories, as evidenced by a certificate.

ADVANTAGES

Custom designs tailored to customer needs Working range 0.6 to 6.0 m Single, double, or triple telescopic piston, two or four-post configuration Load resistance up to 15 MN/m² (150 t/m²) Advanced or web support application for the reinforcement system Equipped with extendable or articulated and extendable fixed canopies Uniform base sections (split or catamaran type) Suitable for use at angles up to 45° sideways and up to 20° vertically.



PARTNER

GALLERY OPENING SYSTEMS

GENERAL FEATURES

These machines are designed for gallery excavations ranging from 16.4 m² to 43.1 m² and operate in rock formations with pressure resistance ranging from 60 MPa to 110 MPa. The machines can be used in underground excavations without methane leakage or in excavations classified as having methane hazards of "a", "b" or "c" methane explosion hazard or 'A' or "B" coal dust explosion hazard. Provided that the power supply is disconnected when the maximum methane concentration reaches 2%.

ADVANTAGES

Easy to use and maintain

- Easy transport of each component
- Easy underground installation
- Surfaces exposed to wear are coated with highly wear-resistant materials
- The hydraulic system is adapted to supply external hydraulic receivers at a pressure of 12 to 20 MPa - Wide range of configuration options



» **FAMUR**

**PART-
NER**

TRANSPORTATION SYSTEMS



GENERAL FEATURES

Belt conveyor systems are the flagship product of the FAMUR Group in terms of underground transportation systems. Currently, dozens of kilometers of these conveyors are in operation in underground mines. FAMUR belt conveyors, designed for the most challenging mining conditions, are the greatest testament to our experience in the mining industry. During the design process, we always focused on meeting customer requirements by taking into account all external factors, such as mining operations, hazards in the mine, or general gallery conditions. In addition to the design process, we are confident that our comprehensive approach to the highest production standards guarantees that our transport systems have been operating reliably for years.





PART- NER

UNDERGROUND ELECTRICAL
EQUIPMENT



GENERAL FEATURES

Elgor+Hansen supplies and manufactures electrical and connection equipment used in the mining industry. It provides a full range of services in the design, production, and repair of intrinsically safe devices. It offers comprehensive solutions for integrated supply and control systems.

ADVANTAGES

The company's offer includes: project documentation development (electrical, automation, IT), industrial software implementation, certification and documentation procedures, project execution, integration and commissioning (including work in potentially explosive areas), inspection equipment installation, and training in the use of appropriate systems and devices.



- Medium Voltage Power Distribution Equipment Medium
- Voltage Switching Equipment Transformer Stations
- Circuit
- Breakers
- Transwitch

- Vacuum Contactors
- Frequency Converters
- Motor Starters
- Soft Starters



PARTNER

UNDERGROUND ELECTRICAL
EQUIPMENT

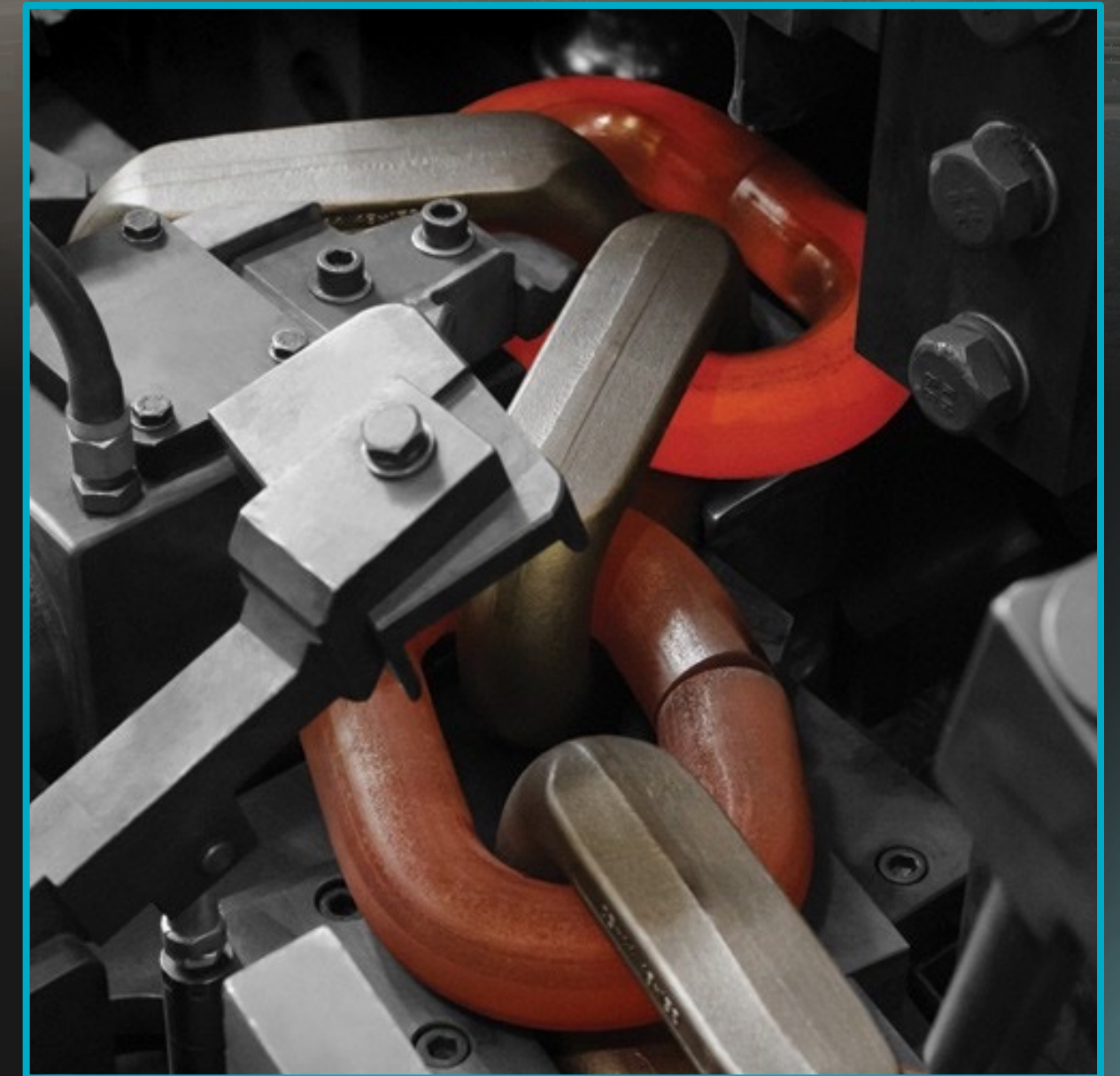
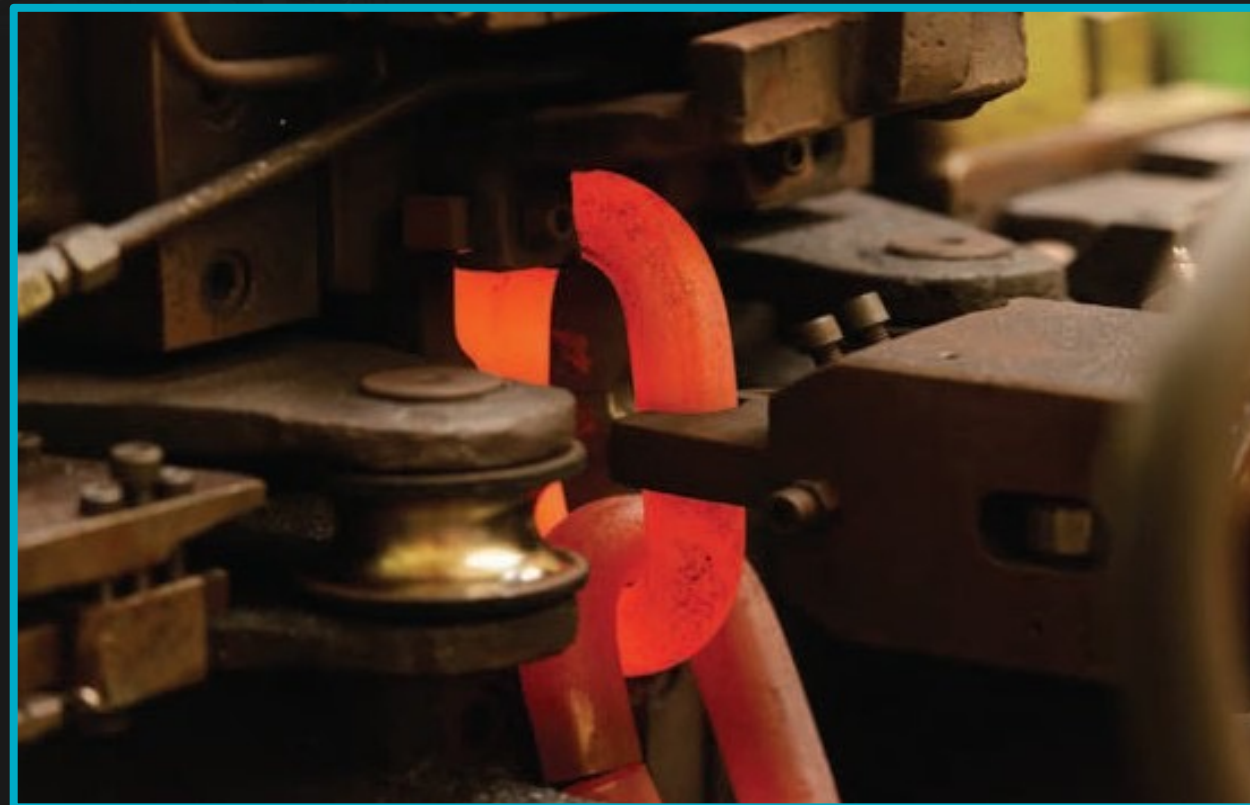


GENERAL FEATURES

FASING can meet the demands of dynamically changing markets by continuously developing its products and offering innovative and modern technological solutions. The diversity of chain applications requires each product to have different technical parameters and features. Therefore, FASING offers a wide range of chains and accessories. Products can be customized to meet customer needs as they are manufactured according to specific customer requirements.

PART- NER

CHAIN CONVEYOR
ACCESSORIES



Under this approach, their motto is: "There are no perfect chains that meet all requirements, but there are chains that are perfectly suited for specific conditions." FASING manufactures chains with diameters ranging from 14 to 60 mm and accessories for various industrial sectors.





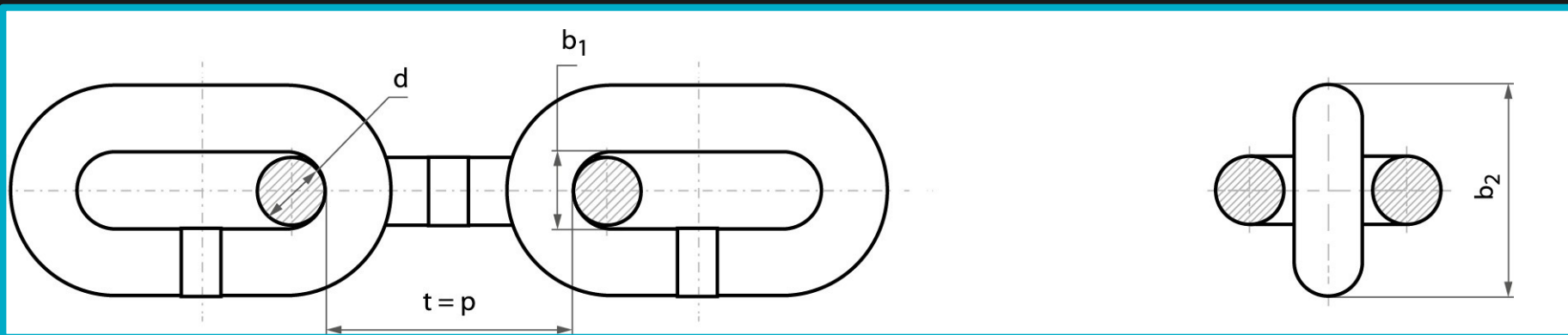
PARTNER

CHAIN CONVEYOR ACCESSORIES

FASING's global success is primarily based on its high quality and wide range of products. Since 2003, FASING's Integrated Quality and Environmental Management System has been operating in accordance with the PN EN ISO 9001 and PN EN ISO 14001 standards. The high quality and safety of the products are ensured by regularly updated, globally recognized standards, as well as awards received in Poland and internationally.

These industries include:

- The mining sector,
- The energy sector
- Lifting and transportation sector,
- Sugar and cement sector,
- Fishing industry.



For underground mining, FASING manufactures:

- Round link chains,
- Flat link chains,
- Chain locks,
- Conveyor pallets and pallet locks,
- Complete chain systems.





PART- NER

HYDRAULIC CONTROL
UNITS

GENERAL FEATURES

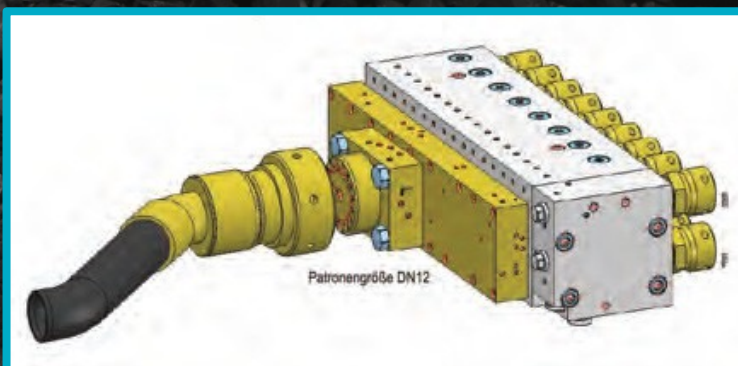
A young company specializing in underground mining. They use their products and specialized knowledge to identify and develop the weaknesses of major competitors in collaboration with their customers. Their employees have gained extensive experience and knowledge in these companies, enabling them to provide reliable answers to questions related to the process engineering of coal production in automated long-term operations. The right partner to assist you with advice and replacement products, especially for hydraulic tasks and system issues of this kind! Until the controls are completed, the relevant assemblies or components are supplied at low cost in a technically mature and excellent quality by the parties and installed on request.



AREAS OF USE

The product range extends from special mats for mirrors, drive conversion machines, electronically controlled pump stations, supply lines in the form of pipelines or hose lines, electronically controlled filter systems, clearly arranged electronic and hydraulic mat controls with all additional valves, to hydraulic pistons. The components are approved in various countries, and the company is also qualified and certified according to EN standards.

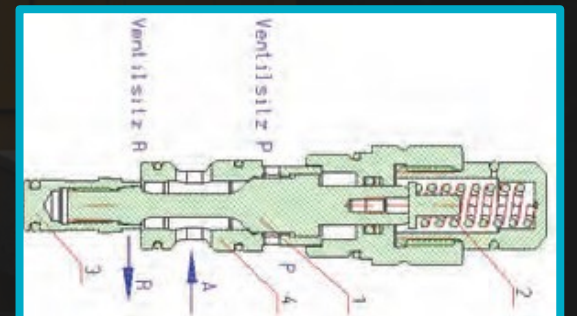
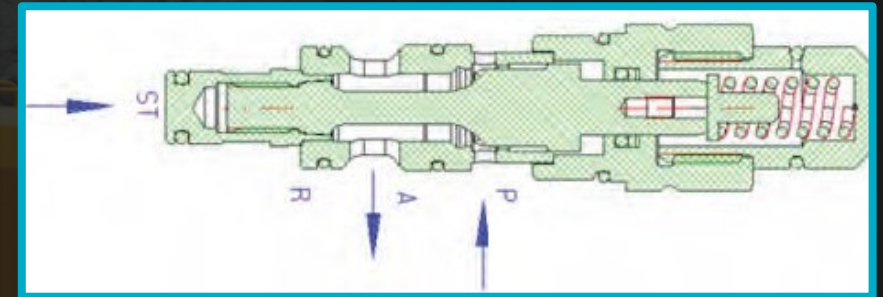
DAT Bergbautechnik GmbH provides its customers with expert consulting and modern, innovative services, including regular maintenance for businesses and facilities interested in DAT products. DAT possesses the necessary system knowledge and experienced specialists to resolve issues quickly and provide customers with world-class service. In this context, DAT has the capacity to provide the fastest and most efficient assistance in the event of any problems that may arise and to involve relevant specialist companies. Its brand values include the latest mining technology, quality, adherence to deadlines, and excellent service, all of which contribute to success in mining facilities.



DAT assists its customers until the facilities are put into operation and also provides optimal after-sales service. During this process, customers make decisions regarding their requirements for necessary or ongoing service. Details of these services can be specified within a service agreement. In addition to newly manufactured units and machinery from factories, DAT also offers used mining equipment that has been optimally refurbished.

PART- NER

HYDRAULIC CONTROL UNITS





HASO is a specialist manufacturer developing safety equipment for explosive ignition systems, spark safety, and underground mining. Its product portfolio includes capacitive ignition magnets, safety solutions for ignition lines, methane measurement devices, remote control systems, and spark safety components. HASO's solutions comply with international safety standards and aim to provide the highest level of safety in mines and other hazardous industrial areas.



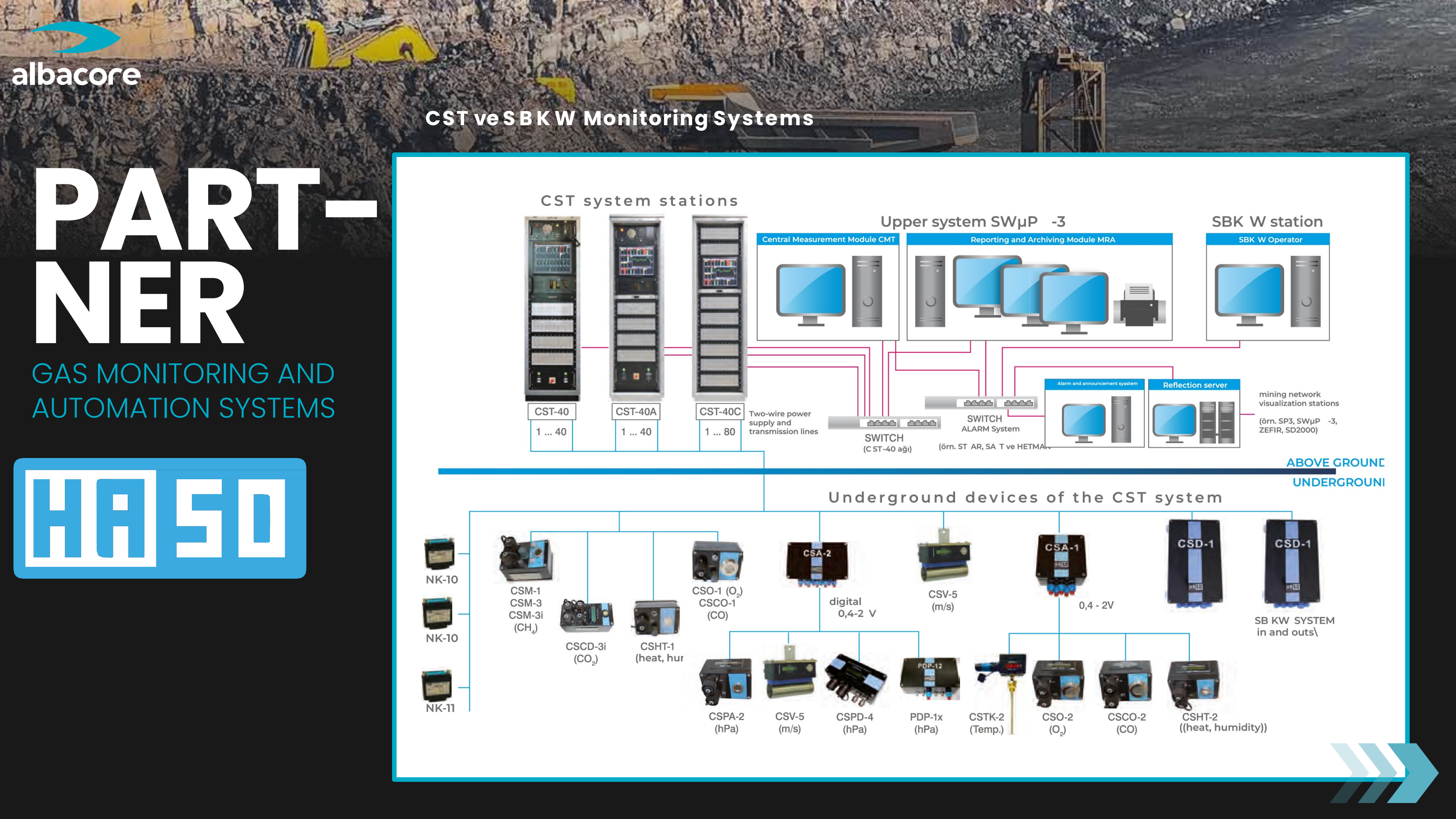
PART- NER

PORTABLE METHANE SENSOR AND
MAGNETOMETRIC LOCKED MAGNETO

Integrated Security Ignition Magnet and Methane Meter Cooperation

HASO's HZK-101M capacitive ignition machine, when used with suitable methane detectors (e.g., MPS-1i), ensures reliability in ignition areas with high methane gas risk. In this system, methane concentration is continuously monitored; if the gas level reaches the threshold specified in the relevant legislation, the ignition machine automatically switches to blockage mode. The connector terminals on the ignition machine have an “ia” protection level, and the connected device maintains the “M1” category safety standard. This allows blasting operations to be carried out safely and in full compliance with regulations.

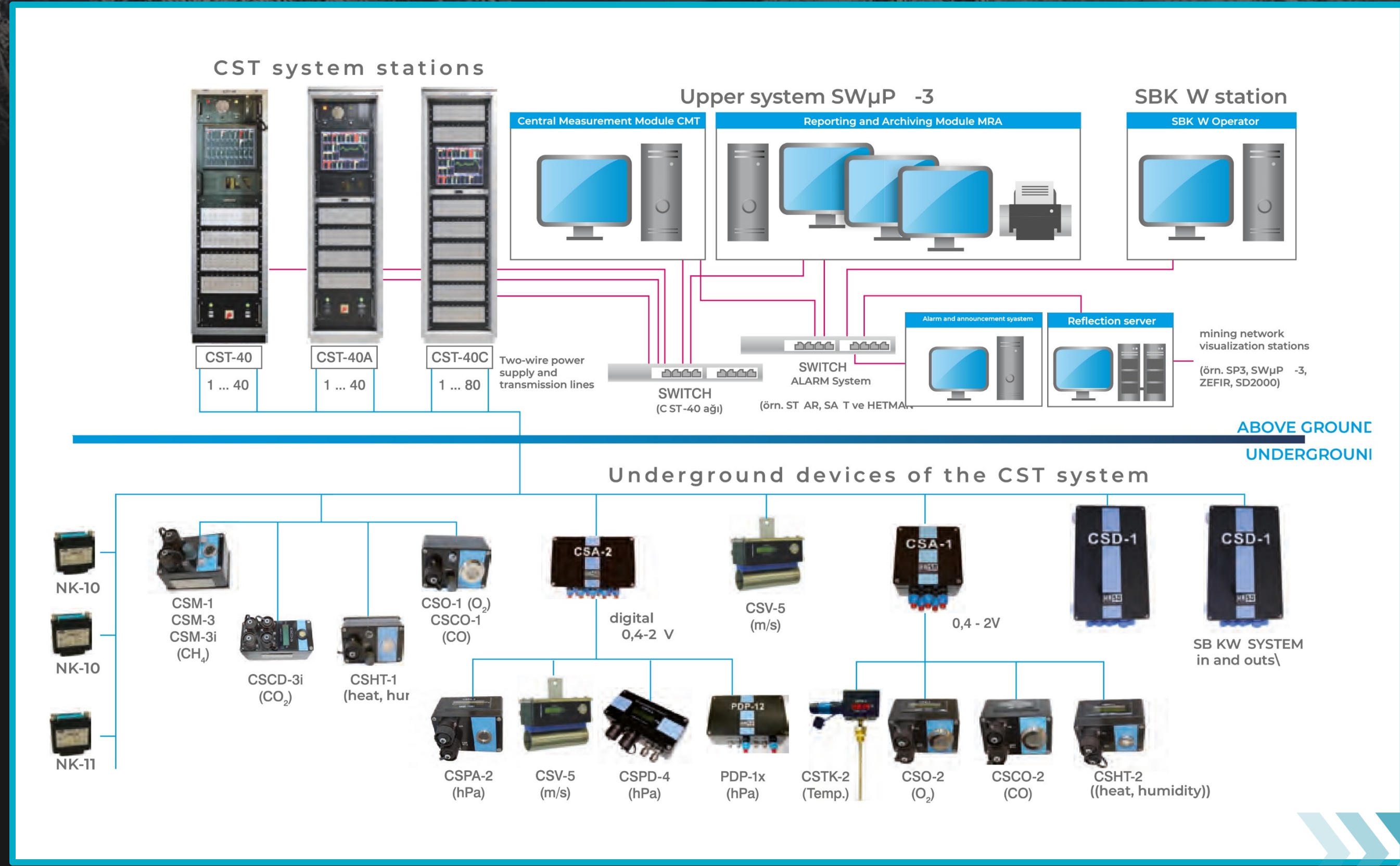




CST ve SBKW Monitoring Systems

PARTNER

GAS MONITORING AND AUTOMATION SYSTEMS



GENERAL FEATURES

Founded in 1988 with its headquarters in Ruda Śląska, KSK has dedicated itself to the production of slurry pumps based on its own research projects since 1993, drawing on its extensive experience, and has produced watertight pumps for the mining, energy, and other industries. The pumps are used to remove water and wall fillings from mine walls, as well as to remove sludge from tanks, sewers, and other channels, and to pump sludge and sewage.

PART- NER

SUBMERSIBLE PUMP

It provides technical advice on the selection and characteristics of pumps, enabling users to meet their specific requirements even in very exceptional circumstances.

The construction does not require cooling with the pumped liquid. Therefore, the quality of the pumps is extremely high even under difficult conditions. To improve flexibility and quick installation, it designs filling and water pipeline elements in the form of articulated connections, rotating connections, and bolts that allow the user to perfectly match the pipeline with mine walls, terrain configuration, and similar features.



KSK



PSZ pumps are used to drain swamps and also to clean water inflows.

In addition to offering its customers high-quality products, it provides quality service, warranty, and repair services throughout the life of its pumps.

The growing user base that values the quality of KSK's products and services includes:

Coal mines, power plants, thermal and power plants, construction departments and building materials, sugar factories, foundries, thanks to the experience gained during the use of pumps to meet the needs of its users, it is currently designing pumps that are modernized and switchable between 500V and 1000V and operate at 1000V.

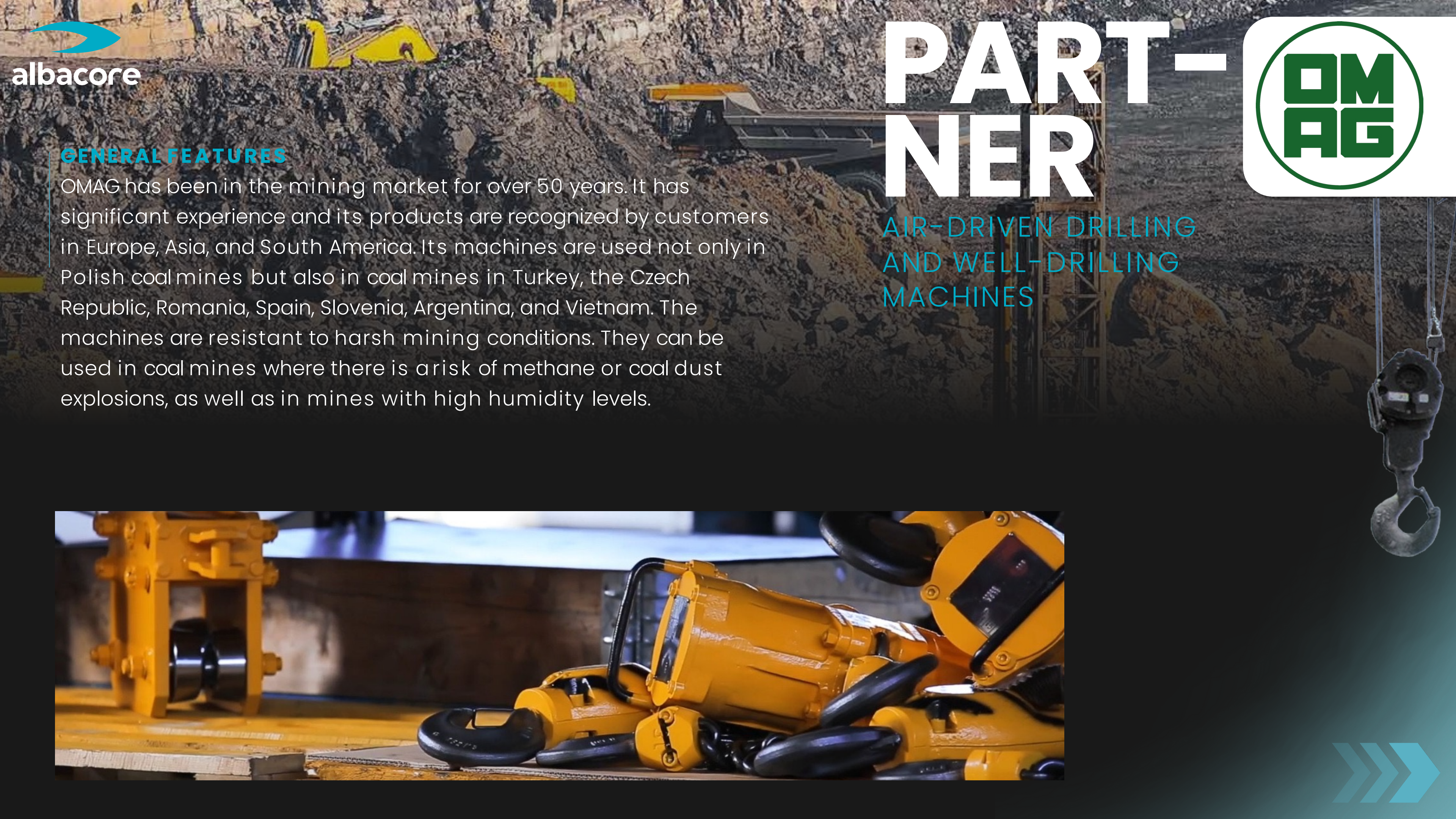
KSK



**PART-
NER**

SUBMERSIBLE PUMP





PART- NER



GENERAL FEATURES

OMAG has been in the mining market for over 50 years. It has significant experience and its products are recognized by customers in Europe, Asia, and South America. Its machines are used not only in Polish coal mines but also in coal mines in Turkey, the Czech Republic, Romania, Spain, Slovenia, Argentina, and Vietnam. The machines are resistant to harsh mining conditions. They can be used in coal mines where there is a risk of methane or coal dust explosions, as well as in mines with high humidity levels.

AIR-DRIVEN DRILLING
AND WELL-DRILLING
MACHINES





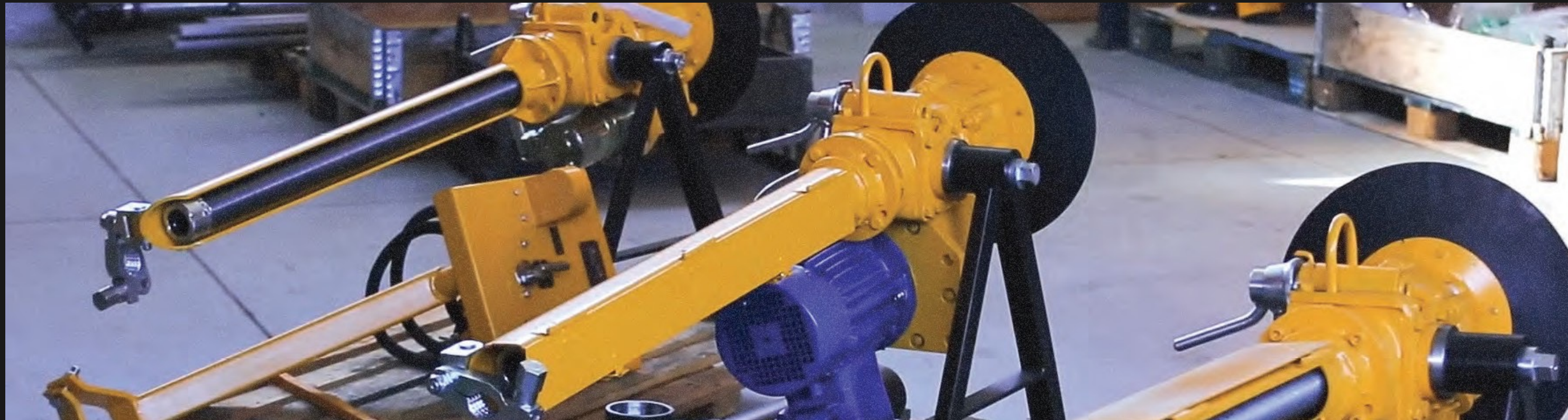
PART- NER



The offers consist of the following product groups:

- Electric, pneumatic, or hydraulic-powered small-diameter drilling machines capable of drilling holes up to 300 meters deep
- Electric, pneumatic, or hydraulic-powered fixed and mobile cranes with a lifting capacity of 3 to 10 tons
- Transport beams used for suspended monorails with a lifting capacity of up to 6 tons

AIR-DRIVEN DRILLING
AND WELL-DRILLING
MACHINES



PARTNER

HYDRAULIC COUPLINGS



MOJ S.A. is a growing company operating in the electric machinery sector. MOJ S.A. manufactures products used in the mining industry;

Comprehensive Industrial Couplings

Drilling Machines

Drilling Equipment

Drainage Pumps

Small-Scale Mechanical Equipment manufacturer.

SH Type Hydrokinetic Couplings are designed for use in the drive systems of machines that operate under difficult movement conditions, are exposed to large and sudden loads, and have a high inertia force level. When SH type hydrokinetic couplings are used, the drive start-up process is smoother, the operating time of electric motors running at high currents is reduced, sudden pulling and braking movements are absorbed, and all dynamic overloads are eliminated. The couplings can be used in machines operating in underground mining facilities classified under methane explosion categories 'a', 'b', or 'c', and coal dust explosion hazards levels A and B.

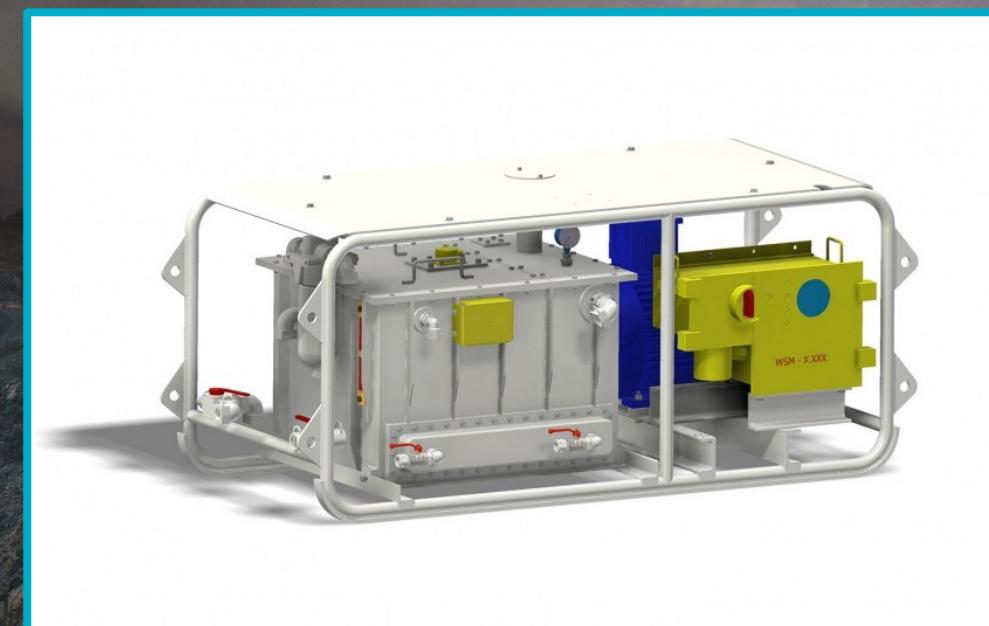
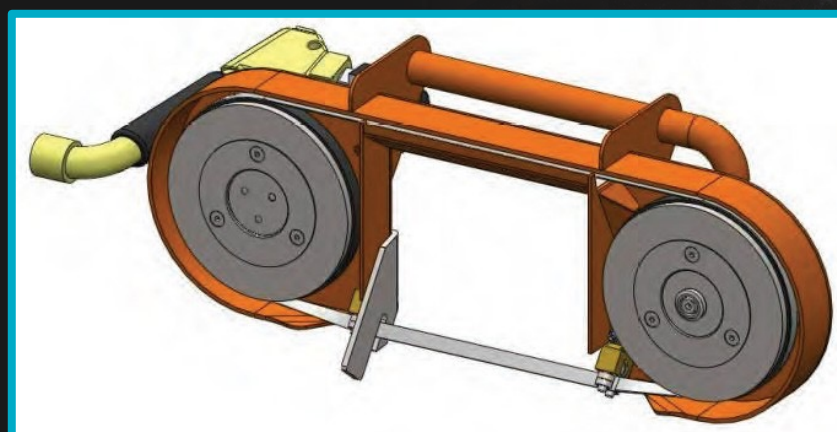


PARTNER

DRILLING MACHINES
AND EQUIPMENT

PZW-1 Pneumatic Hole Drilling Set

Designed to drill holes in medium and high hardness rocks at different angles using compressed air at a pressure of 0.4 to 0.6 MPa. The PZW-1 pneumatic drilling set cleans the debris left in the drilled hole with water or pressurized air. The drilling set includes the WUP-22 drill, which is mounted on a pneumatic base. The base supports the drill and reduces user effort by ensuring equal pressure is applied to the drill bit during the drilling process.



ER-6 127 V, 220 V Manual Electric Camping

Designed for drilling holes in coal and similar hardness level rocks using Ø 43 mm diameter helical drill bits. The drill is flame-resistant and can be used in underground mining operations and other facilities where there is a risk of methane explosion in categories "a", "b" or "c" and coal dust explosion in levels A or B. The drill is manufactured in the following versions: ER-6, ER-6/4, suitable for the following voltages: ER-61 (3x127 V), ER-62 (3x220 V) and ER-61/4 (3x127 V), ER-62/4 (3x220 V). The ER-6...u version, which has a hammering head that supports the drilling process, is also available.



OPA-ROW;

- Its own equipment resources (specialized measurement and testing instruments, computer programs for preparing electrical and mechanical projects, technical equipment required for assembly work, etc.),
- Its own workshop, storage, and transportation facilities,
- Its own laboratory facilities.

PART- NER

WELL MODERNIZATION



It operates and develops activities based on providing comprehensive inspection and measurement services in the areas listed below.

- Electrical power engineering
- Well hoisting machinery
- Drive systems
- Industrial automation and electronics
- Environmental protection
- Energy equipment
- Equipment with self-contained safety features

PART- NER

DRILLING MACHINES AND EQUIPMENT

Inspections related to well drilling rigs are carried out within the following scope:

- Analysis of the causes of malfunction in individual systems
- Post-failure inspections
- Post-installation, commissioning, and acceptance inspections - Measurement and analysis of harmonic components in power supply lines
- Inspections related to the technical condition of articulated connections in brake systems
- Inspections aimed at detecting faults in the subsystems of well drilling rigs (ultrasonic, magnetic, penetration, visual)
- Selection of drive systems for well drilling rigs.



OPA-ROW holds expert certification issued by the President of the Polish Mining Institute for the operation of mining facilities. The expert certification covers the following groups of mining equipment:

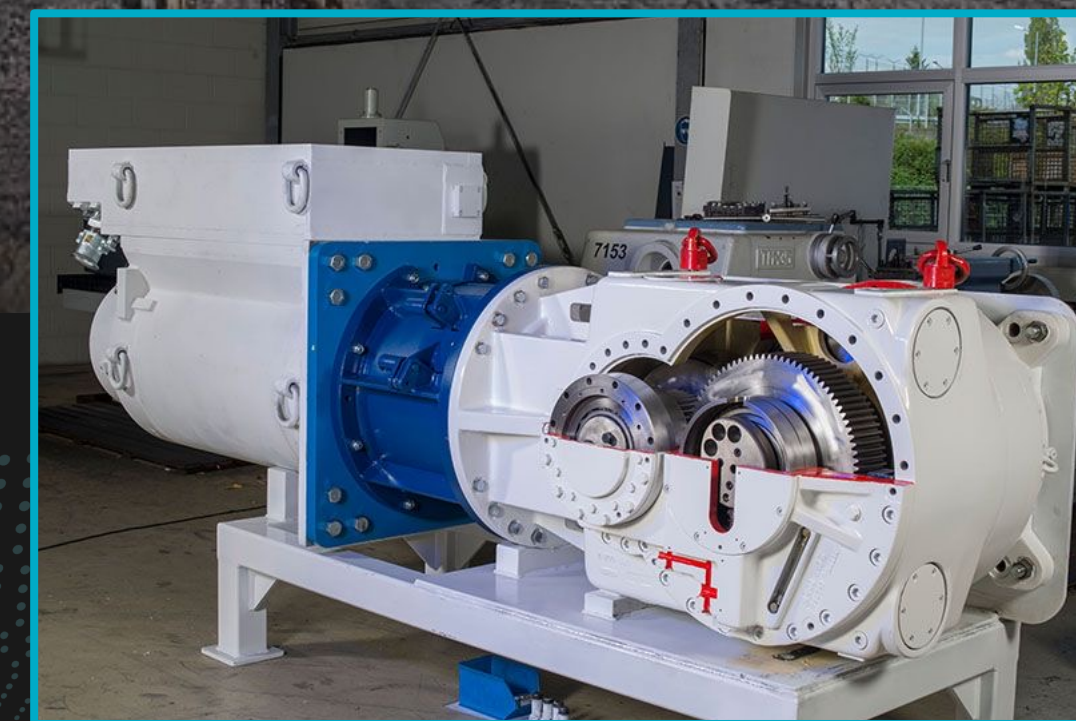
- Shaft hoisting machines – mechanical part,
- Shaft hoisting machines – electrical part,
- Cage/skip and rope harness assemblies, Molets,
- Devices used in potentially explosive atmospheres,

Electrical devices and equipment:

- Cables and wires,
- Electrical tools.

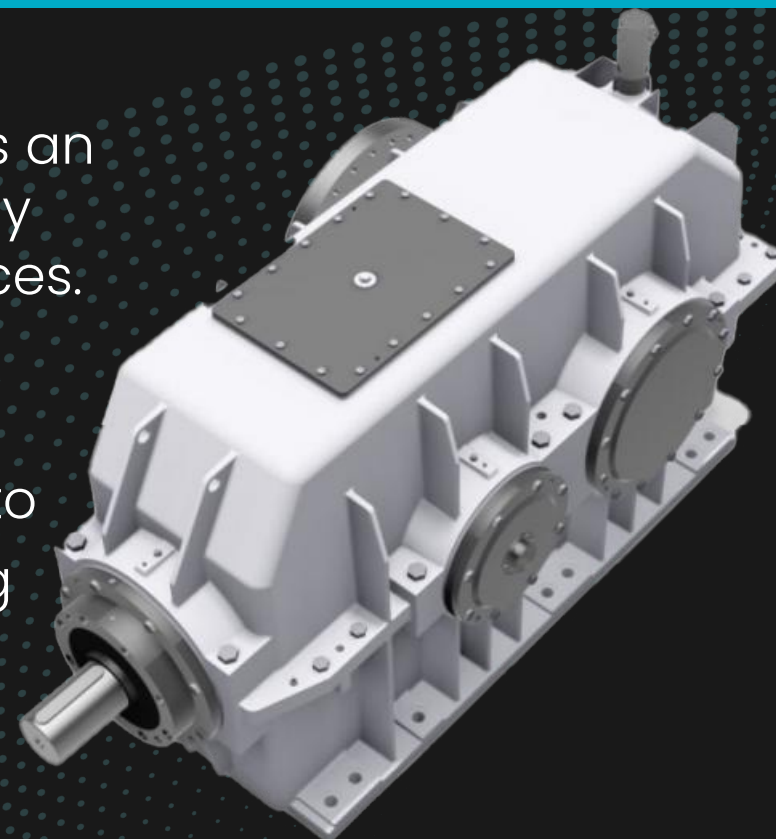
PARTNER

INDUSTRIAL REDUCERS



With over 100 years of experience in the industry as an independent gear manufacturer and developer, they offer a wide range of gear manufacturing and services.

They provide solutions to their customers with a diverse product range, from customized reducers to durable reducers designed for demanding working conditions. They have products to suit every need, including high-performance and high-speed gearboxes. They maintain quality standards by manufacturing in series with the tightest tolerances and state-of-the-art CNC workshops, while ensuring the durability of their products with on-site heat treatment and hardening workshops.



By conducting metallographic analyses in their own laboratories to ensure material quality, they test all reducers at their own facilities to guarantee reliability. They also offer reverse engineering and technical support services for reducers from other manufacturers in the industry, providing a wide range of solutions. In addition to offering comprehensive support to their customers with flexible maintenance, repair, and spare parts services, they also provide an emergency support line that is available at all times.



By conducting metallographic analyses in their own laboratories to ensure material quality, they test all reducers at their own facilities to guarantee reliability. They also offer reverse engineering and technical support services for reducers from other manufacturers in the industry, providing a wide range of solutions. In addition to offering comprehensive support to their customers with flexible maintenance, repair, and spare parts services, they also provide an emergency support line that is available at all times.



PARTNER

DRILLING MACHINES
AND EQUIPMENT

Wide Product Range: Solutions from Machines to Complete PlantsHAZEMAG's product range extends from robust infrastructure to complex systems. Key equipment includes:Primary Impact Crusher (HPI) - provides high crushing capacity and durability. Roller Screen (HRS) - used for effective screening of fine materials. Unirotor Vario (HUV) Hammer Mills - preferred for crushing minerals of varying hardness in the iron and steel industry. Apron Feeder (HAF) - a reliable solution for high-volume material transport. Turmag HTS-4 Drill - offers high-performance, reliable, and compact drilling solutions for underground mining. In addition, products such as the Center Sizer (HCS) and Horizontal Impact Crusher (HHI) prioritize quality and control, particularly in the cement and aggregate sectors.

PARTNER

CONVEYOR BELTS

COZY-FLEX (Cozy Rubber Co., Ltd.) is a company specializing in the production of industrial conveyor belt systems, located in Gaojian Rubber Innovation Park in Zhejiang Province, China. Established in 1986, the company embraces competitive pricing, strict quality control, and ODM technical support as its core values in rubber belt manufacturing.



COZY-FLEX develops products that meet a wide range of needs: flat rubber conveyor belts, chevron patterned belts, sidewall conveyor belts, heat and flame resistant rubber belts, and steel corded belt systems. Its products stand out for their durability, low deformation, high tensile strength, and long service life. Furthermore, the company's belts are certified to ISO 9001:2008, TUV, and Clquality standards.



PARTNER

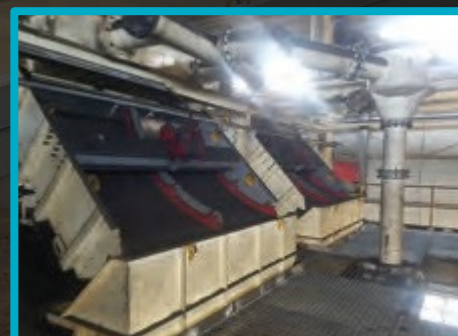
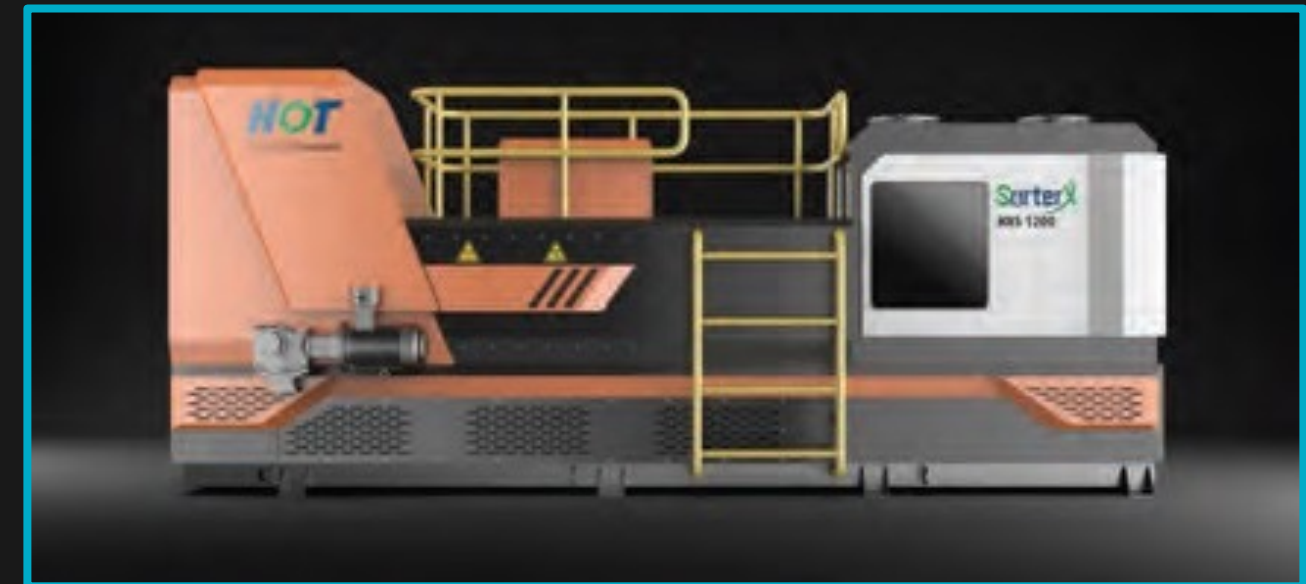
PROCESS EQUIPMENT

HOT

Process For Environment

HOT Mining Tech (HOT, Chengdu Industries Co., Ltd.) is a leading technology provider offering comprehensive engineering and equipment solutions for mining, mineral processing, and coal washing plants. Its product portfolio, supported by AI-integrated sensor and automation technologies, includes advanced technology products such as XRT (X-Ray Transmission) sensor-based ore separator systems, LIPS (Laser-Induced Plasma Spectroscopy) element analyzers, and online ash moisture analyzers.

HOT Mining's product portfolio offers a wide range of solutions tailored to the diverse needs of mining sites: XRT (X-Ray Transmission) sensor ore separators, LIPS element analyzers, online ash and moisture analysis systems, hydraulic support units, coal preparation and washing equipment, conveyor and transport solutions, slurry pumps, flotation machines, dense medium cyclones, screens and crushers. This comprehensive product range enables higher productivity, lower costs, and sustainable production in mining projects.



PARTNER

UNDERGROUND
TELEPHONES



Together with TELKOM-TELOS SA, of which Telvis is the sole shareholder, it is the largest industrial and intrinsically safe telephone manufacturer in Poland and one of the largest in Europe. All devices are certified in accordance with the European Union's ATEX 100A and EMC directives, which permit the use of the CE mark.



Since 1988, they have been manufacturing the highest quality devices and systems for telephone and alarm-broadcast communication in industrial design for Group I - Category M and Group II - Category I hazardous areas. Their solutions have been successfully operating for years in coal, copper, and salt mines, in petrochemical plants, and in industrial facilities requiring reliable wired communication under extremely harsh conditions.



ABC Ventilation Systems is a vertically integrated manufacturer specializing in mining and tunnel ventilation solutions, producing flexible and semi-rigid polymer ducts and air distribution systems. Founded in 1968, the company operates under the principle of "Quality Makes a Difference," offering reliability and performance through its ISO 9001 quality management system, heavy metal-free, phthalate-free environmentally friendly fabric coatings, proprietary production technology, and



PARTNER

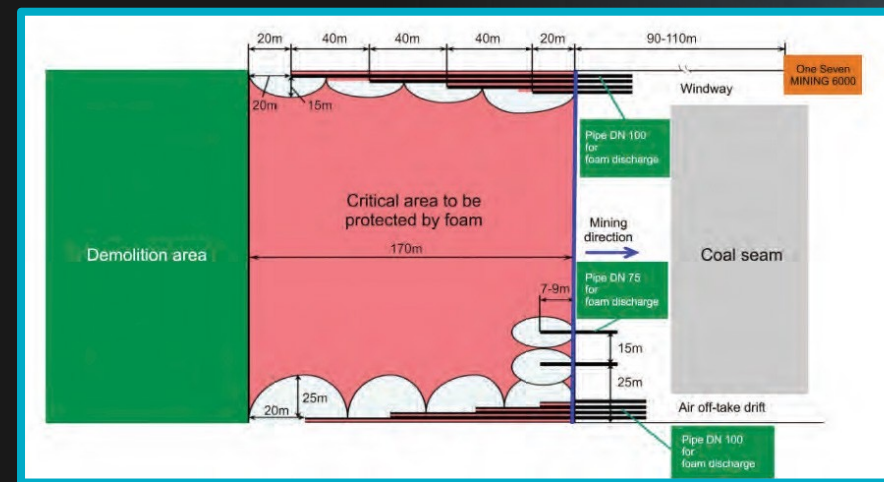
UNDERGROUND VENTILATION
SYSTEMS

ABC Ventilation's product range includes FlexLine performance ducts (MineVent®, Twinduct, Mineduct), HardLine semi-rigid ducts, ToughVent durable fans, silencer systems, brattice (air curtains), curtains and line-brattice barriers, Airstop and shaft protection systems (Overhead Protection / EPASS), ventilation control solutions, and various fan systems (axial and deduster systems). The ToughVent fan series stands out in particular for its structure that is resistant to abrasive, corrosive underground environments, its modular design, and its ability to work in conjunction with FlexLine/HardLine ducts.



PARTNER

FIRE EXTINGUISHING CHEMICALS
AND EQUIPMENT IN MINES



Its core competencies lie in the development and production of modern fire suppression systems. As early as 1995, we specialized in pressurized air foam system technology. Today, Schmitz One Seven GmbH is a global technology leader in this firefighting segment and holds numerous patents. These include the One Seven® technology, which uses foam concentrate and compressed air to create seven homogeneous foam bubbles from a single drop of water.



One Seven® MINING can be used for fire prevention and fire suppression. For prevention, One Seven® dry foam is used to seal hazardous areas in the goaf to prevent fire damp and dust explosions. One Seven® wet foam is used for acute fire suppression in machinery or coal. In the event of a fire, the goaf can be sealed with foam. Since the foam itself has a high cooling effect, the temperature can be reduced very quickly in the event of a fire.

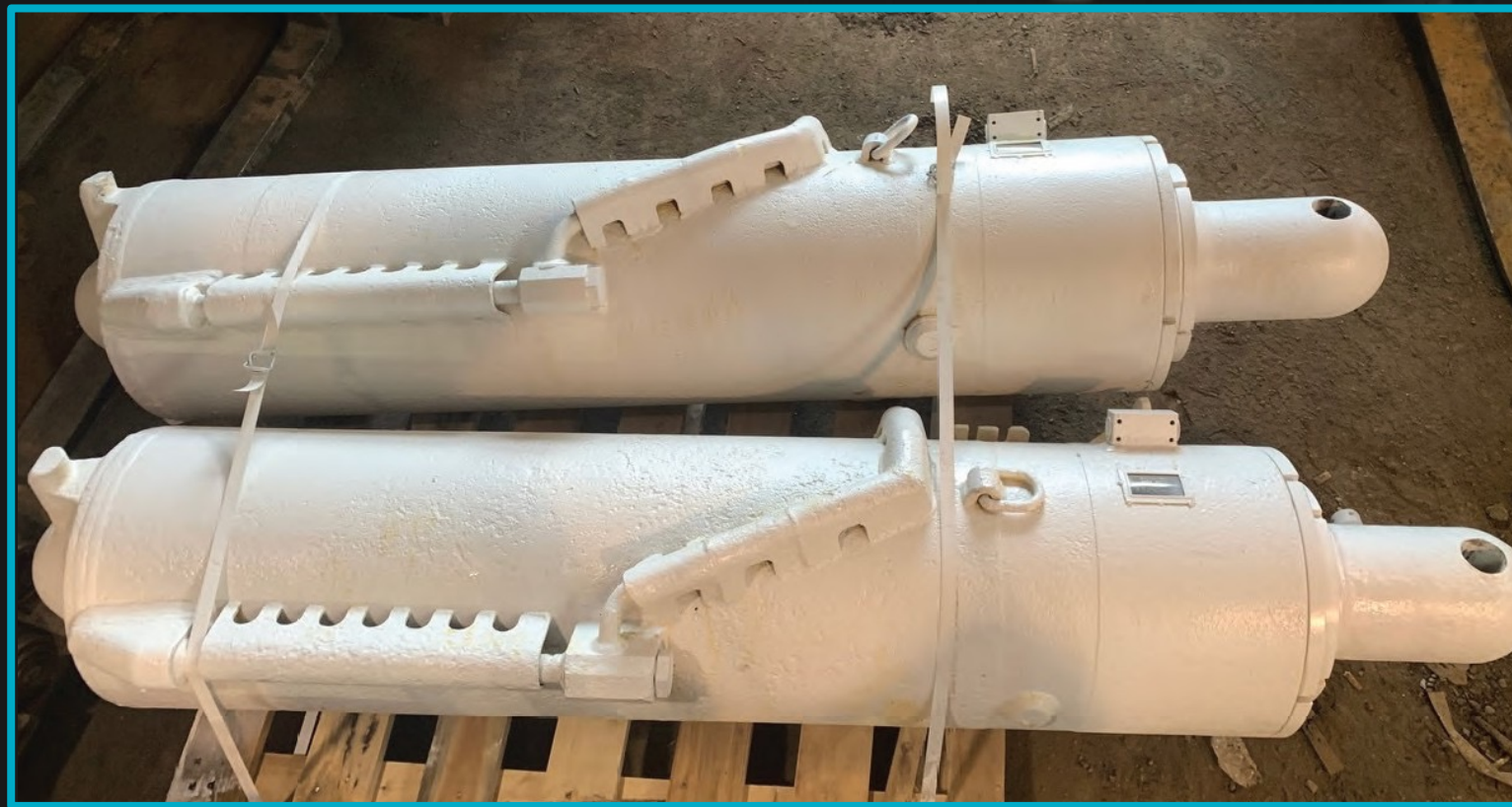


Trent has been manufacturing hydraulic cylinders since 2011. Thanks to its team with over 30 years of experience in the industry, it specializes in the refurbishment and manufacture of a wide range of actuators. Depending on customer preferences, it offers options such as stainless steel or chrome-plated rod coatings for cylinder rods.

PART- NER

HYDRAULIC CYLINDERS

Hydraulic cylinders can be used in various application areas such as construction, power plants, metallurgy, and agriculture, where machines requiring hydraulic actuators are used, such as excavators, forklifts, bulldozers, and cranes.



It provides its customers with a more reliable service by establishing a test station to evaluate the quality of its products and simulate their performance.

Machining centers capable of producing all necessary parts for cylinders can also produce cylinders with smooth surfaces as well as cylinders with long transfer holes.V



PART- NER

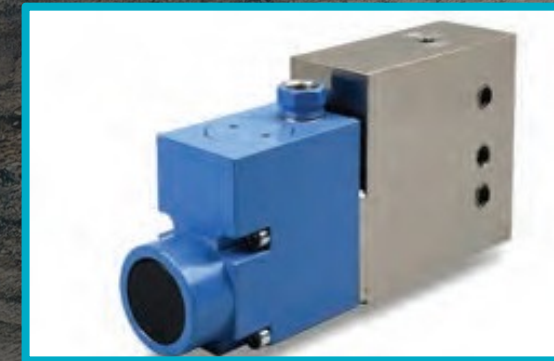
AUTOMATION SYSTEMS



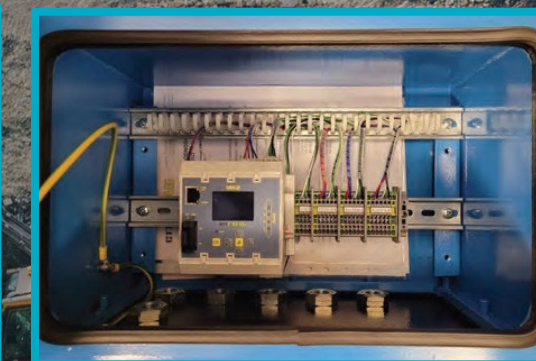
CPW WATER PRESSURE SENSOR



CPW WATER PRESSURE SENSOR



ACTUATOR DISTRIBUTOR



Centrum Transfer Technologii EMAG Sp. z o.o. in Katowice primarily aims to widely transfer technological solutions developed in companies and scientific units to commercial buyers and, in addition, to implement various solutions in business practice. In recent years, the company has been actively involved in the implementation of research and development projects, partly financed by public funds, mostly as a member of an industrial consortium. The company's success is based, on the one hand, on the reputation of the products it offers on the market, the trust of its customers and co-executors, and its strong production and technological capabilities, and on the other hand, on high operational flexibility, optimization of customer service processes, and employee participation.

CTT EMAG

Collaboration with various consortiums enables the company to comprehensively meet the expectations of its business partners not only in Poland but also abroad. For several years, revenues from foreign markets have exceeded 50%, and products bearing our logo are used on all continents. We have developed a brand that is recognized in many countries where natural resources are extracted. The Technology Transfer Center EMAG Sp. z o.o. typically undertakes the implementation of completely new solutions in industrial and public facilities (referred to as first applications).

GENERAL FEATURES EXME

The Berger Group's main activity is to provide the most effective methods for eliminating methane hazards in coal mines, i.e., methane removal, and for obtaining clean energy sources for industrial purposes.



- Methane-free excavations adapted to mining systems and ventilation methods,
- Design and construction of methane pipelines that enable the collection of estimated methane levels,
- Drilling drainage holes from underground galleries,
- Management of the collection process, including the operation of collection stations, inspections, taking measurements, and controlling the intake of methane mixtures,
- Connection, reconstruction, and disposal of methane intakes throughout the progress of coal mining.



PARTNER

DE-METHANIZATION
SYSTEMS



Berger Group

They enable comprehensive methane removal from rock masses under different geological conditions. They work both to eliminate methane hazards in active mining operations and to completely consume methane from produced seams and closed mines and methane sources within the coal mine mass. They also convert underground excavations into drainage, technical, and technological boreholes. They drill boreholes with a full core yield up to 1300 m depth to explore and examine the stratum.





They enable comprehensive methane removal from rock masses under different geological conditions. They work both to eliminate methane hazards in active mining operations and to completely consume methane from produced seams and closed mines and methane sources within the coal mine mass. They also convert underground excavations into drainage, technical, and technological boreholes. They drill boreholes with a full core yield up to 1300 m depth to explore and examine the stratum.

Services:

- Coal gas sampling drilling
- Estimation of methane hazards for galleries and longwall mining,
- Implementation of technical projects related to mine degassing methods and technologies,
- Design and construction of underground and surface collection facilities and equipment,
- Construction of mobile methane de-gasification stations with electric and pneumatic systems for underground work,
- Comprehensive mine de-gasification
- Underground drilling for collection and technical and technological purposes, including 1200 mm diameter holes. In addition to underground drilling equipment, they offer facilities specially de-gassed by EXME. They professionally and quickly perform inspections, repairs, and overhauls of gas compressors, gas control and measurement equipment, and drilling equipment.

PARTNER

DE-METHANIZATION
SYSTEMS



Berger Group



» LÜDECKE

PART-

NER

HOSE CONNECTORS



Lüdecke (Müllenbach Armaturen GmbH) specializes in compressed air fittings and has been selling high-quality connection systems and accessories for a wide range of applications and environments worldwide since 1978. Müllenbach develops and manufactures both standard products and customized products tailored to customer requirements in collaboration with long-term, competent partners.



High-quality quick-connect couplings and threaded connections for rapid compressed air supply:

- Can be easily connected with one hand,
- Compatible with standard slip-on profiles DN 5 and DN 7.2,
- Different connection types and materials (brass, composite material) and additional accessories.

Classic lock-type valves for different pipe systems and different application areas:

- Durable, robust, and reliable
- Maintenance-free, easy to replace, multi-functional use
- Single valves, three-way ball valves, and mini ball valves.

Underground Ventilation and Cooling Solutions Termospec Sp. z o.o. is an international company based in Poland since 2002, specializing in climate control and cooling solutions for underground mines and tunnel projects. The systems developed by the company ensure safe, efficient, and comfortable underground working environments by controlling temperature and humidity. Headquartered in Żory, Termospec has extensive expertise in system design, installation, maintenance, and service, along with cooling machines, air and water coolers, and evaporative solutions. Its products, which are resistant to underground conditions, increase both worker safety and comfort while contributing to operational efficiency.



PARTNER

UNDERGROUND COOLING
EQUIPMENT



Oxygen-Supplied Individual Rescue Mask and Headlamp ASTAR is a high-tech company established in 1995. Specializing in explosion-proof safety equipment and emergency solutions, the company stands out in the mining industry with its products that raise safety standards. Its product range includes miner headlamps, self-rescuers, ATEX-certified lighting products, protective equipment, communication systems, drilling and boring equipment, dust suppression solutions, and measuring devices.

ASTAR's miner headlamps offer a reliable solution for underground conditions with their high lighting power, long battery life, and explosion-proof construction. Their ergonomic design ensures worker comfort during prolonged use, while their durability adapts to harsh working conditions.





PARTNER



ATEX-CERTIFIED
CABLE CONNECTORS



PROOF MINING

PRATLEY



ATEX-CERTIFIED CABLE
CONNECTORS AND CONNECTION BOXES





albacore



PART- NER

ATEX-COMPLIANT
PNEUMATIC AND
HYDRAULIC EQUIPMENT

ROSIT Group, which we represent as Albacore, is a leading brand in the global tool service market, specializing in electric, pneumatic, and hydraulic drive technologies. It offers high-quality industrial solutions with a wide range of products, including cutting, drilling, assembly, demolition, grinding, lifting, fluid control equipment, and accessories.



ROSIT prioritizes product safety, efficiency, and portability through continuous research and innovation. By deeply understanding user needs, ROSIT develops comprehensive system solutions across multiple areas, from production to the supply chain, delivering global value to its users.



Get in Touch With Us

T: +90 232 332 20 18 | F: +90 232 332 20 25

info@albacore.com.tr

www.albacore.com.tr

@albacoremining

Atasehir Mahallesi, 8292. Sokak No: 12/2 35620 Çigli /Izmir /Türkiye



albacore

Come. See. Connect.